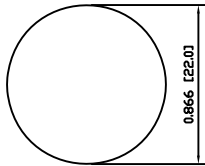
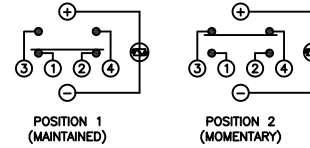


SUGGESTED PANEL CUTOUT



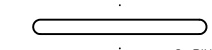
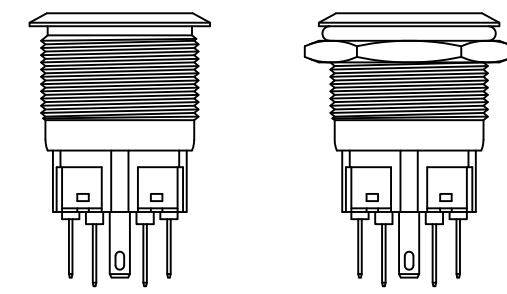
MAXIMUM PANEL THICKNESS: 0.315 [8.0mm]

SCHEMATIC

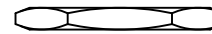


POSITION 1 (MAINTAINED)

POSITION 2 (MOMENTARY)

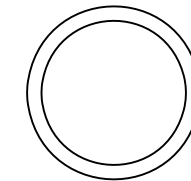


O-RING



HEX NUT

EXPLODED VIEW



ASSEMBLED VIEW

SPECIFICATIONS

- FUNCTION:**  
1PNO OFF-(ON) + 1PNC ON-(OFF)
- RATING:**  
2A 48VDC
- ILLUMINATION VOLTAGE:**  
2.8V 20mA
- CONTACT RESISTANCE:**  
Initial: 50mΩ Max. at 1A 12VDC
- INSULATION RESISTANCE:**  
1,000MΩ Min. at 500VDC
- DIELECTRIC STRENGTH:**  
2,000VAC Min. for 1 Minute
- ELECTRICAL LIFE:**  
50,000 Cycles
- MECHANICAL LIFE:**  
1,000,000 Cycles
- TEMPERATURE:**  
Operating: -40°C to 70°C
- INGRESS PROTECTION:**  
IP65
- APPROVALS:**  
**RoHS**  
COMPLIANT

MATERIALS

- BUSHING:**  
Stainless Steel (304)
- BASE:**  
Polyamide 6/6 (PA66)
- ACTUATOR:**  
Stainless Steel (304)  
Polycarbonate (PC), UL94 V-2
- HARDWARE:**  
Nickel Plated Brass (H59)
- SEALING:**  
Silicone  
Stainless Steel (304)
- INNER ASSEMBLY:**  
Polyamide 6/6 (PA66)  
Brass (H59)  
Stainless Steel (304)
- SPRING:**  
Stainless Steel (304)
- CONTACTS:**  
Silver Plated Copper
- TERMINALS:**  
Brass
- O-RING:**  
Nitrile Butadiene Rubber (NBR)

COLORS AND FINISH

- BEZEL:**  
Stainless Steel  
Machine Finish
- ACTUATOR:**  
Stainless Steel  
Machine Finish
- ILLUMINATION:**  
Green (Forward)  
Green (Reverse)
- MARKING:**  
None

BODY	A	09/07/22	CAB
COLORS	A	09/07/22	CAB
MATERIALS	A	09/07/22	CAB
SPECIFICATIONS	A	09/07/22	CAB
REFERENCE	REV.	DATE	BY

THE INFORMATION CONTAINED IN THIS DOCUMENT IS PROPRIETARY TO E-SWITCH AND IS NOT TO BE COPIED OR TRANSFERRED

A	INITIAL RELEASE	PCRD0105	09/09/11	CAB
REV.	DESCRIPTION	PCR	DATE	DRAWN BY

DIMENSIONS	
INCHES [MILLIMETERS]	
GENERAL TOLERANCES	
±0.008 [±0.2] / ±1'	
SCALE	PROJECTION
DRAWING NOT TO SCALE	1st Angle

PV7F2Y0SS-231		
DRAWING NUMBER	DATE	REVISION
52-PV7F2Y0SS231	SEPTEMBER 11, 2009	A