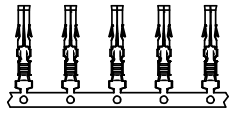
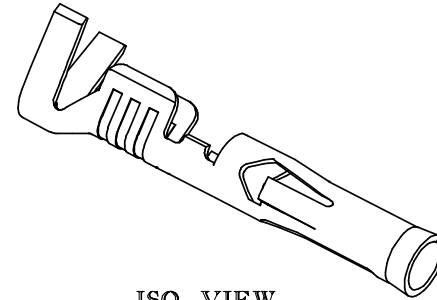
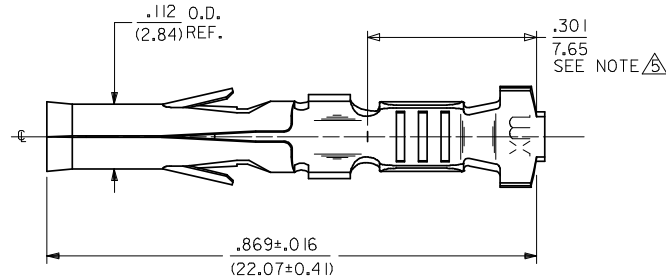


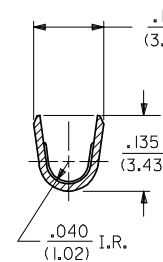
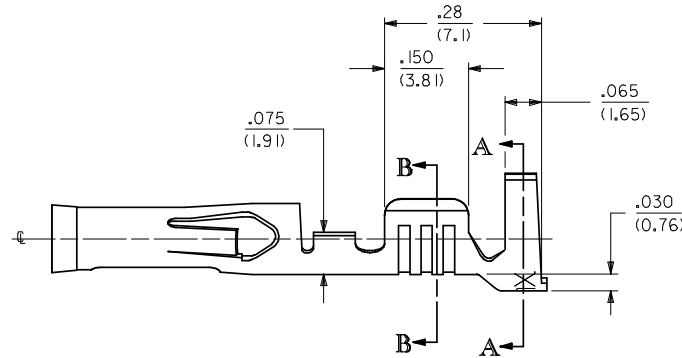
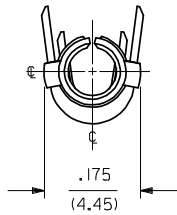
PART NO.	ENG. NO.	FORM
02-09-1615	42477-0005	CHAIN



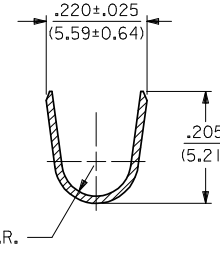
CHAIN FORM SHOWN
FULL SCALE



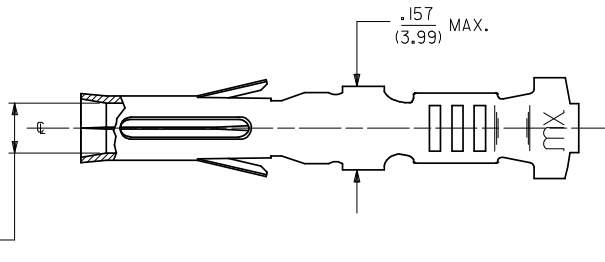
ISO VIEW



SECT. B-B



SECT. A-A



NOTES:

1. MATERIAL: 70/30 CARTRIDGE BRASS PER ES-124-D209.
2. FINISH: HOT TIN DIP, .000080/(0.00203) TO .000020/(0.00051) THICK.
3. PRODUCT SPECIFICATION PSX-42477 APPLIES.
4. THESE TERMINALS ARE FOR USE WITH .093/(2.36) SERIES HOUSINGS AND ACCEPT #14 THRU #18 AWG WIRE WITH A MAXIMUM INSULATION DIAMETER OF .140/(3.56).

DIMENSION FROM THE END OF TERMINAL TO THE END OF THE BRUSH ON THE WIRE CRIMPED INTO THE TERMINAL.

REVISE NOTE 2 EC NO: UCP2009-0059 DRAWN: GAVERILL 2008/07/08 CHKD: JBELL 2008/07/10 APPR: FSM/TH 2008/07/10	DESCRIPTION G1	QUALITY SYMBOLS ▽=0 ▽=0	GENERAL TOLERANCES (UNLESS SPECIFIED)		DIMENSION STYLE IN/MM		SCALE 6:1	DESIGN UNITS INCH	THIRD ANGLE PROJECTION
			mm	INCH	DRAWN BY GMC	DATE 1989/06/21	TITLE TERMINAL, SOCKET .093/(2.36) DIA., CRIMP FOR 14-18 AWG		
			4 PLACES ± --- ± ---		CHECKED BY RHR	DATE 1989/06/21	MATERIAL NO. 02-09-1615		DOCUMENT NO. SD-42477-****
			3 PLACES ± --- ± .010		APPROVED BY GWF	DATE 1989/06/21	SHEET NO. 1 OF 1		
			2 PLACES ± 0.25 ± .014		DRAFT WHERE APPLICABLE MUST REMAIN WITHIN DIMENSIONS				
			1 PLACE ± 0.35 ± ---		THIS DRAWING CONTAINS INFORMATION THAT IS PROPRIETARY TO MOLEX INCORPORATED AND SHOULD NOT BE USED WITHOUT WRITTEN PERMISSION				
			ANGULAR ± 1/2°						

13

12

11

10

9

8

7

6

42477

4

3

2

1

CHARACTERISTICS

PART NO.

ENG. NO.

MATERIAL

FINISH

PLATING

LUBRICATION

BARREL DESIGN

FORM

02-09-1615

42477-0005

A

2

N

6

I

MATERIALS:

A) BRASS, ALLOY #C26000, TEMPER: SPRING, .013/(0.33) THICK.

FINISHES:

PLATING

2) HOT TIN DIP, .000020/(0.00051) MIN. THICK.



42477

DIMENSIONS SHOWN (METRIC) INCH

UNLESS OTHERWISE SPECIFIED TOLERANCES: ANGULAR ± 1/2°

	INCH	METRIC
3 PLACE	± ---	---
2 PLACE	± ---	± ---
1 PLACE	---	± ---

DRAFT WHERE APPLICABLE MUST REMAIN WITHIN DIMENSIONS

DRWG. BY JAS CHK'D. BY RHR APP'D. BY GWF SCALE ---:---

▽ = 0 ▼ = 0

REVISE ONLY ON CAD SYSTEM

TITLE TERMINAL, SOCKET, .093/(2.36) DIA., CRIMP

MOLEX INCORPORATED SHEET NO. 2 DATE 6/29/89 LISLE, ILL. 60532 U.S.A.

PART NO. 02-09-1615 DRWG. NO. SD-42477-****

THIS DRAWING CONTAINS INFORMATION THAT IS PROPRIETARY TO MOLEX INC. AND SHOULD NOT BE USED WITHOUT WRITTEN PERMISSION.

LTR.	REVISIONS	LTR.	REVISIONS
		G	SEE SHEET I
		BI	SEE SHEET I
		B	SEE SHEET I
		A	SEE SHEET I
		2	SEE SHEET I
		I	SEE SHEET I

A

13

12

11

10

9

8

7

6

5

4

3

2

1