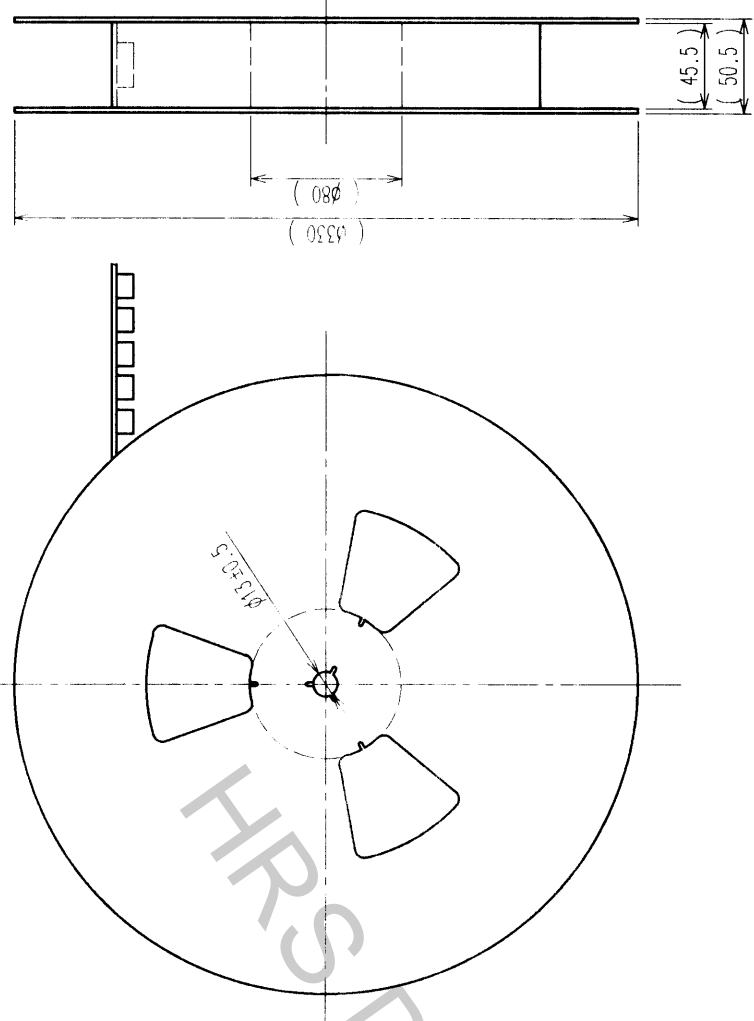
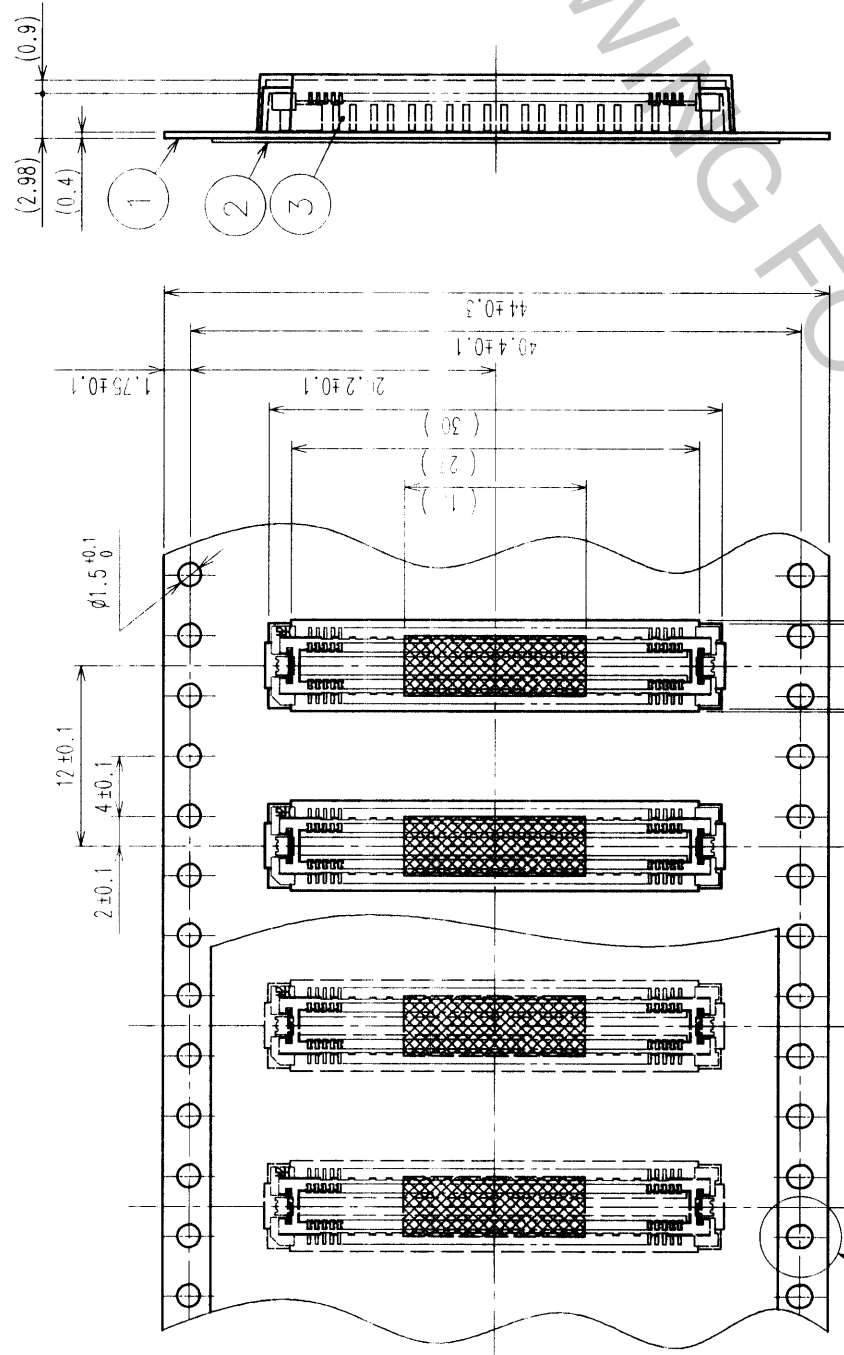


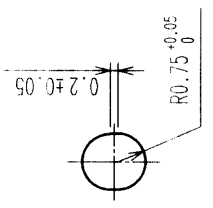
COUNT	DESCRIPTION OF REVISIONS	BY	CHKD	DATE	COUNT	DESCRIPTION OF REVISIONS	BY	CHKD	DATE

REELED DIMENSION (FREE)

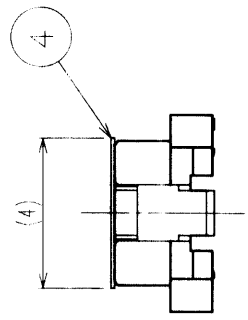


THE DIRECTION OF PULLING OUT →

A (5 : 1)



DETAIL FOR VACUUM PICKUP (5:1)



- NOTES 1 1 REEL: 1000 CONNECTORS.
- 2 MINIMUM 10 COMPARTMENTS FROM BOTH REEL ENDS REMAIN EMPTY.
- 3 THIS PRODUCT HAS NO POLARITY TO TAPE AND REEL PACKAGING.

2	PET	TOP COVER TAPE	4	POLYIMIDE	(TAPE FOR VACUUM PICKUP)
1	PS	EMBOSSED CARRIER TAPE	3	(CONNECTOR)	
NO.	MATERIAL	FINISH, REMARKS	NO.	MATERIAL	FINISH, REMARKS
CODE NO. (OLD) CL					
DRAWING FOR PACKING			DRAWN J. MATSUKAWA		
			DESIGNED M. ISHIDA		
			CHECKED Y. YOSHIMURA		
			APPROVED Y. YOSHIMURA		
			RELEASED		
DRAWING NO. EDC3-152628-02			PART NO. FX11B-100P-SV0.5(22)		
SCALE 2 : 1			CODE NO. CL573-0653-5-22		
UNITS [mm]			HITACHI		

TO	
PCK	